

RESEARCH CENTRE
Bordeaux - Sud-Ouest

IN PARTNERSHIP WITH:
Université de Bordeaux

2021
ACTIVITY REPORT

Project-Team
MEMPHIS

Modeling Enablers for Multi-Physics and InteractionS

IN COLLABORATION WITH: Institut de Mathématiques de Bordeaux
(IMB)

DOMAIN

Applied Mathematics, Computation and Simulation

THEME

Numerical schemes and simulations

Contents

Project-Team MEMPHIS	1
1 Team members, visitors, external collaborators	2
2 Overall objectives	3
2.1 Multi-physics numerical modeling	3
2.1.1 Reduced-order models: convergence between PDE models and data	3
2.1.2 Schemes for Hierarchical meshes, multi-physics and asymptotic limits	3
3 Research program	4
3.1 Numerical models	4
3.2 Applications	5
4 Application domains	5
4.1 Energy conversion	5
4.2 Schemes for turbulent flow simulations using Octrees	6
4.3 Vascular flows	7
4.4 Fluid-structure interactions using Eulerian non-linear elasticity models	7
5 Social and environmental responsibility	8
5.1 Impact of research results	8
6 Highlights of the year	9
7 New results	9
7.1 Fluid-Fluid-Structure interactions	9
7.2 Component-based model order reduction for radioactive waste management	9
7.3 Registration methods for advection-dominated PDEs	10
7.4 Numerical modeling of a real zebrafish swimming: an effort test	11
7.5 Fluid-structure interactions on AMR enabled quadtree grids	12
7.6 An ADER approach for the incompressible Navier-Stokes model on Overset Grids	13
7.7 Projection-based reduced-order models for unsteady compressible flows	13
7.8 Aortic aneurysms: automatic segmentation and registration	16
8 Bilateral contracts and grants with industry	17
8.1 Bilateral Contracts with Industry	17
9 Partnerships and cooperations	17
9.1 International initiatives	17
9.1.1 Associate Teams in the framework of an Inria International Lab or in the framework of an Inria International Program	17
9.1.2 Inria International Partners	17
9.2 International research visitors	17
9.2.1 Visits of international scientists	17
9.2.2 Visits to international teams	17
9.3 European initiatives	18
9.3.1 FP7 & H2020 projects	18
9.3.2 Collaborations with Major European Organizations	18
9.4 National initiatives	18
9.5 Regional initiatives	19

10 Dissemination	19
10.1 Promoting scientific activities	19
10.1.1 Scientific events: organisation	19
10.1.2 Journal	19
10.1.3 Invited talks	19
10.2 Teaching - Supervision - Juries	20
10.2.1 Teaching	20
10.2.2 Supervision	20
10.2.3 Juries	20
10.3 Popularization	21
11 Scientific production	21
11.1 Major publications	21
11.2 Publications of the year	21
11.3 Cited publications	23

Project-Team MEMPHIS

Creation of the Project-Team: 2016 October 01

Keywords

Computer sciences and digital sciences

- A6. – Modeling, simulation and control
 - A6.1.1. – Continuous Modeling (PDE, ODE)
 - A6.1.5. – Multiphysics modeling
 - A6.2.1. – Numerical analysis of PDE and ODE
 - A6.3.1. – Inverse problems
 - A6.3.2. – Data assimilation
 - A6.3.4. – Model reduction
 - A6.5.1. – Solid mechanics
 - A6.5.2. – Fluid mechanics
- A9.2. – Machine learning

Other research topics and application domains

- B2.2.1. – Cardiovascular and respiratory diseases
- B4.2. – Nuclear Energy Production
- B4.3.2. – Hydro-energy
- B4.3.3. – Wind energy
- B5.2.3. – Aviation
- B5.2.4. – Aerospace
- B5.5. – Materials

1 Team members, visitors, external collaborators

Research Scientists

- Michel Bergmann [Inria, Researcher, HDR]
- Tommaso Taddei [Inria, Researcher]

Faculty Members

- Angelo Iollo [Team leader, Univ de Bordeaux, Professor, HDR]
- Afaf Bouharguane [Univ de Bordeaux, Associate Professor]

Post-Doctoral Fellows

- Antoine Fondaneche [Inria, from Oct 2021]
- Nishant Kumar [Inria, from Oct 2021]
- Gwladys Ravon [Inria]
- Sebastien Riffaud [Inria, from Apr 2021 until Oct 2021]
- Lei Zhang [Inria, until Sep 2021]

PhD Students

- Eki Agouzal [Inria, CIFRE, from Mar 2021]
- Beatrice Battisti [Ecole Polytechnique de Turin]
- Michele Giuliano Carlino [Inria]
- Antoine Fondaneche [Univ de Bordeaux, until Aug 2021]
- Caroline Anna Lise Andrea Le Guern [Inria, from Oct 2021 until Nov 2021]
- Karl Maroun [Univ de Poitiers, from Nov 2021]
- Thomas Philibert [Ecole Polytechnique de Turin]
- Michele Romanelli [ONERA, from Oct 2021]
- Ludovica Saccaro [Inria]
- Giulia Sambataro [ANDRA]
- Alexis Tardieu [Univ de Bordeaux, from Oct 2021]

Interns and Apprentices

- Pascal Engelibert [Univ de Bordeaux, from Jun 2021 until Jul 2021]

Administrative Assistant

- Anne-Laure Gautier [Inria]

Visiting Scientists

- Andrea Christine Thomann [University of Insubria in Como (Italy), from Sep 2021 until Oct 2021]
- Elena Travaglia [Ecole Polytechnique de Turin, Oct 2021]

External Collaborator

- Majdi Azaiez [Institut National Polytechnique de Bordeaux, HDR]

2 Overall objectives

2.1 Multi-physics numerical modeling

2.1.1 Reduced-order models: convergence between PDE models and data

Unprecedented opportunities exist to directly use already collected computational or experimental data to improve and build predictive models that can be used online for the simulation of parametric problems, robust design, and control in science and engineering. In this regard, our goal is to combine mechanistic causal models based on partial differential equations (PDEs) with large data sets to reduce the marginal cost of predictions.

Reduced-order models (ROMs) are our main tool for this purpose. ROMs are parametric mathematical models derived from the full set of PDEs using previously computed solutions. In many applications, the solution space turns out to be low-dimensional, so one can trade a minimal loss of accuracy for speed and scalability. ROMs counteract the curse of dimensionality by significantly reducing computational complexity.

Overall, ROMs have reached a certain level of maturity during the last decade, allowing their implementation in large-scale industrial codes, mainly in structural mechanics. Nevertheless, some hard points stand. Parametric problems governed by strong advection fields or sensibly compact-support solutions such as moving shocks suffer from a limited possibility of dimensional reduction and, at the same time, insufficient generalization of the model (out-of-sample solutions). The main reason for this is that the solution space is usually approximated by an affine or linear representation, which is intrinsically broad band for such problems.

We have worked on the development of model order reduction (MOR) techniques for nonlinear, advection-dominated problems, with emphasis on projection-based Galerkin and Petrov-Galerkin ROMs. First, we worked on the development of effective sampling strategies to reduce training costs. Second, we developed nonlinear, registration-based approximation techniques, to overcome limitations of linear approximation methods (e.g., proper orthogonal decomposition, POD) to deal with strong advection fields. Third, we developed hybrid formulations that combine reduced-order and full-order models to deal with complex flow features and/or complex parameterizations.

2.1.2 Schemes for Hierarchical meshes, multi-physics and asymptotic limits

The schemes we have developed aim at simulating complex multiphysics phenomena through appropriate PDE modeling, automatic implicit geometry representation (level sets), hierarchical Cartesian schemes (quad-octrees), parallel simulations, and accurate treatment of boundaries. Discretization schemes on hierarchical meshes allow multiscale solution of PDEs on non-body-fitted meshes with a drastic reduction in computational setup overhead. The key idea is to use an octree mesh to approximate the solution fields, while the geometry is captured by level set functions. The boundary conditions are determined by appropriate interpolation methods to achieve sufficient accuracy. This approach eliminates the need for boundary conforming meshes, which require time-consuming and error-prone mesh generation procedures, and opens the door to easy parallel simulation of very complex geometries.

One of the limitations of this approach is that a mesh with a fixed aspect ratio is not optimal for very anisotropic fields such as boundary layers. For such cases, we explored the idea of using a body-fitted grid near the immersed obstacles and a hierarchical mesh in the background. Essentially, we use the techniques we have developed to impose boundary conditions on non-body-matched meshes further from the boundary, where the solution is smoother and more isotropic. Our current investigations build on discontinuous Galerkin (DG) methods / ADER approaches to combine efficient interpolation strategies at the grid interfaces and compact reconstruction of the data at the grid level.

Part of our activity has been dedicated to improve schemes for all Mach number flows in both fluid dynamics and continuum mechanics. Phenomena of interest involve fluid flows and elastic materials whose deformations are investigated within a monolithic Eulerian framework. With this approach any

material (gas, liquid or solid) can be described with the same system of conservation equations and a suitable general formulation of the constitutive law.

These schemes are accurate in computing steady state solutions as well as in approximating material wave propagation in various Mach regimes and different materials. We are presently studying methods to overcome the need to solve for auxiliary relaxation variables while preserving the properties of the linearly implicit schemes. To achieve this, we split the stiff relaxation source terms from the fluxes and then reformulate the homogeneous part in an elliptic form.

3 Research program

Coherently with our investigation approach, we will start from applications to identify key methodological problems, study those problems and go back to actual code implementation.

3.1 Numerical models

We aim to further develop automated model-order reduction (MOR) procedures for large-scale systems in computational mechanics — here, automated refers to the ability to complete the analysis with minimal user intervention. First, we wish to combine nonlinear MOR with mesh adaptation to simultaneously learn rapid and reliable ROMs and effective high-fidelity discretizations over a range of parameters. Second, we wish to develop component-based MOR procedures to build inter-operable components for steady and unsteady nonlinear PDEs: towards this end, we should develop efficient localized training procedures to build local ROMs for each archetype component, and also domain decomposition techniques to glue together the local models for prediction. We also wish to develop and analyze hybrid approaches that combine and merge first-principle models with data-fit models, and also full-order and reduced-order models for prediction of global engineering quantities of interest.

These objectives, hence, do not substantially differ in the long term from the previously but some of the methods that we develop can be complemented by available tools from machine learning, like solution clustering, optimal sampling, classification of the solutions... In this respect, a leap forward in industrial applications that we will pursue is without doubts the possibility of capitalizing on previous experience drawn from already acquired simulations to build non-intrusive models combining non-linear interpolations and non-linear regression. New perspectives in this direction are offered by the Chair Onera-Nouvelle Aquitaine. This Chair (Angelo Iollo and Denis Sipp of Onera are the PIs) was pre-funded in late 2021 and is endowed with 6 PhD grants and 2 post docs. This framework partly funded by Onera, the french aerospace lab, and the region Nouvelle Aquitaine will be dedicated to several aspects of reduced modeling and data driven models involving research and industrial partners. One PhD thesis funded by the Chair has already started end 2021 dedicated to data driven wall-law models for turbulent simulations (Michele Romanelli). The goal is to apply deep learning approaches to approximate wall laws for airfoils. In this direction, with the PhD of Thomas Philibert funded by Politecnico di Torino in co-direction with our team, we will be investigating data-driven models that intrinsically respect physical constraints for turbulence modeling. Two additional PhD thesis funded by the Onera-Nouvelle Aquitaine Chair are foreseen in 2022 dedicated to distributed non-linear interpolations and surrogate models (response surface, clustering, active subspaces).

As for approximation schemes for PDEs, with respect to the previous evaluation, emphasis will be put on the representation of the solution in each computational cell by adopting a DG / ADER approach to improve accuracy at the level jumps. This approach will be complemented with a Chimera grid at the boundaries in order to improve accuracy by a body fitted mesh avoiding grid generation complexity for a general, possibly varying, geometrical topology. The thesis of Alexis Tardieu started in October 2021 and funded by the university of Bordeaux will study this approach. Still in this direction we will continue to study asymptotic scheme for multimaterials, towards a unified approach for compressible and incompressible materials.

In parallel, we will continue our exploration of schemes that contour the problem of accuracy and time stepping in the asymptotic regimes such as low and high mach numbers for multi-material flows, the Graal being an asymptotic preserving scheme that is able to capture phenomena at the time scale of

the fast waves and of the material waves with the same accuracy, exclusively choosing the appropriate time-scale.

3.2 Applications

For energy applications, we will continue our investigations on wave energy converters and windturbines. Relative to wave energy converters, we are developing multifidelity models coupling the incompressible Navier-Stokes equations (NSE) around the floater with a Proper Orthogonal (POD) Reduced Order Model elsewhere. In April 2022, a two year post doc, funded by Inria and the Region Nouvelle Aquitaine, will continue in that direction replacing the POD model with an asymptotic one like shallow water equation or Boussinesq model. A similar approach (NSE-POD coupling) is also considering for wind-turbines. In the two year post doc of Nishant Kumar, founded by the Inria-IfpEN program and started in October 2021, we implement a multi-fidelity approach within the SOWFA framework. In the PhD of Caroline Le Guern, funded by the Inria-IfpEN program and started in December 2021, we are studying the fluid-structure interactions of a new generation of large windturbines (250 meter rotor) using the Deeplines software co-developed by IfpEN. The collaboration with EDF is likely to be continued in the direction of multi-fidelity models (HFM-ROM) in the Telemac Mascaret code.

Within the ARIA project, in collaboration with Nurea and the bio-mechanics lab of the Politecnico di Torino, we will investigate the idea of data augmentation starting from a given aneurysm database. We will construct statistically relevant synthetic aneurysms that can provide both heterogeneity and closeness to reality to test new bio-markers for aneurysm rupture. The thesis of Ludovica Saccaro funded by Inria is dedicated to this subject.

We are proposing a DFG-CNRS project (with Wolfgang Schröder, RWTH Aachen University) related to the Finite Size Objects Interacting in Turbulent Flows, and more precisely on the development of particle-interaction models for spheroidal particles in turbulent free jets. We are also participating in proposing a European Project around Green Aviation/Airport with focus on reduced order models, gappy data and surrogate models.

We will also increase our interactions with biological and physicists partners. In the ANR DRAGON, we will build a digital twin of a snake swimming based on data obtained by biologists.

The software development will be continued. We will pursue the development of the NEOS library: NEOS will be distributed in open source LGPL-3.0. The HIWIND software will be rewritten based on NEOS library.

4 Application domains

4.1 Energy conversion

We apply the methods developed in our team to the domain of wind engineering and sea-wave converters. In Figure 1, we show results of a numerical model for a sea-wave energy converter. We here rely on a monolithic model to describe the interaction between the rigid floater, air and water; material properties such as densities, viscosities and rigidity vary across the domain. The appropriate boundary conditions are imposed at interfaces that arbitrarily cross the grid using adapted schemes built thanks to geometrical information computed via level set functions [37]. The background method for fluid-structure interface is the volume penalization method [28] where the level set functions is used to improve the degree of accuracy of the method [4] and also to follow the object. The underlined mathematical model is unsteady, and three dimensional; numerical simulations based on a grid with $\mathcal{O}(10^8)$ degrees of freedom are executed in parallel using 512 CPUs.

In the context of the Aerogust (Aeroelastic gust modelling) European project, together with Valorem, we investigated the behavior of wind turbine blades under gust loading. The aim of the project was to optimize the design of wind turbine blades to maximize the power extracted. A meteorological mast (Figure 2(a)) has been installed in March 2017 in Brittany to measure wind on-site: data provided by the mast have been exploited to initialize the mathematical model. Due to the large cost of the full-order mathematical model, we relied on a simplified model [35] to optimize the global twist. Then, we validated the optimal configuration using the full-order Cartesian model based on the NaSCar solver. Figure 2(b) shows the flow around the optimized optimized wind turbine rotor.

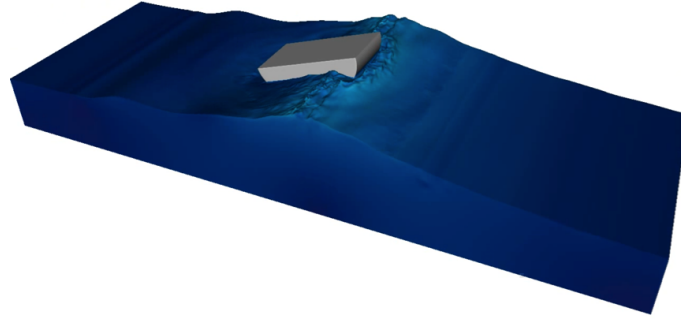


Figure 1: numerical modeling of a sea-wave converter by a monolithic model and Cartesian meshes.

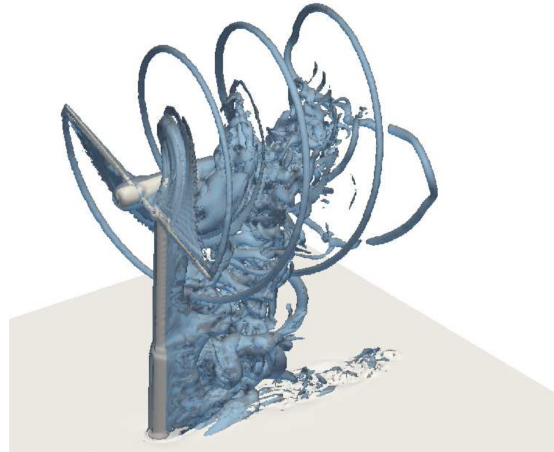


Figure 2: Aerogust project. Left: met mast after its installation. Right: flow around a NREL wind turbine rotor (as predicted by NaSCar).

4.2 Schemes for turbulent flow simulations using Octrees

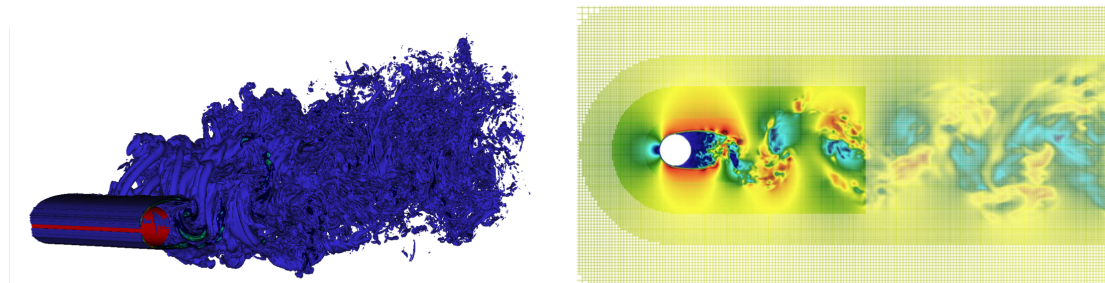
We have initially developed and tested a 3D first-order Octree code for unsteady incompressible Navier-Stokes equations for full windmill simulations with an LES model and wall laws. We have validated this code on Occigen for complex flows at increasing Reynolds numbers. This step implied identifying stable and feasible schemes compatible with the parallel linear Octree structure. The validation has been conducted with respect to the results of a fully Cartesian code (NaSCAR) that we run on Turing (with significantly more degrees of freedom) and with respect to experimental results.

Subsequently, we have developed a second-order Octree scheme that has been validated on Occigen for a sphere at a moderate Reynolds number ($Re = 500$), see Table 1. Then, for a cylinder at ($Re = 140000$) (Figures 3(a) and 3(b)), close to real applications, we have preliminary validation results for the second-order scheme with respect to experimental drag coefficient (Table 2). Additional resources will be asked on Occigen to complete the study.

Mesh	Δx_{\min}	number of cells	C_D (1 st -order scheme)	C_D (2 nd -order scheme)
1	0.094	$0.72 \cdot 10^5$	N.A.	0.526
2	0.047	$4.9 \cdot 10^5$	0.595	0.522
3	0.023	$4.7 \cdot 10^6$	0.546	0.492
4	0.012	$37.6 \cdot 10^6$	0.555	0.496

Table 1: Flow past a sphere at $Re = 500$. Results in the literature are spread between $C_D = 0.48$ and $C_D = 0.52$.

Case	C_D
Octree, 1 st -order scheme	1.007
Octree, 2 nd -order scheme	1.157
Cartesian	1.188
Experimental estimate [32]	1.237

Table 2: Flow past a sphere at $Re = 14000$.Figure 3: flow past a cylinder at $Re = 140000$. Left: vorticity contour lines. Right: streamwise velocity section and grid for the second-order Octree scheme.

4.3 Vascular flows

A new research direction pursued by the team is the mathematical modelling of vascular blood flows in arteries. Together with the start-up *Nurea* and the surgeon Eric Ducasse, we aim at developing reliable and automatic procedures for aneurysm segmentation and for the prediction of aneurysm rupture risk. Our approach exploits two sources of information: (i) numerical simulations of blood flows in complex geometries, based on an octree discretization, and (ii) computed tomography angiography (CTA) data. Figure 4 shows the force distribution on the walls of the abdominal aorta in presence of an aneurysm; results are obtained using a parallelized hierarchical Cartesian scheme based on octrees.

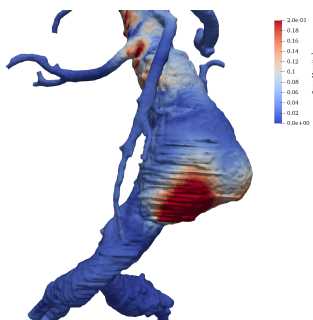


Figure 4: force distribution on the walls of the abdominal aorta in presence of an aneurysm.

4.4 Fluid-structure interactions using Eulerian non-linear elasticity models

Mathematical and numerical modeling of continuum systems undergoing extreme regimes is challenging due to the presence of large deformations and displacements of the solid part, and due to the strongly non-linear behavior of the fluid part. At the same time, proper experiments of impact phenomena are particularly dangerous and require expensive facilities, which make them largely impractical. For this reason, there is a growing interest in the development of predictive models for impact phenomena.

In MEMPHIS, we rely on a fully Eulerian approach based on conservation laws, where the different materials are characterized by their specific constitutive laws, to address these tasks. This approach was introduced in [34] and subsequently pursued and extended in [36, 33, 29, 31] and [9]. In Figure 5, we

show the results of the numerical simulation of the impact of a copper projectile immersed in air over a copper shield. Results are obtained using a fully parallel monolithic Cartesian method, based on a 4000^2 fixed Cartesian grid. Simulations are performed on a cluster of 512 processors, and benefits from the isomorphism between grid partitioning and processor topology.

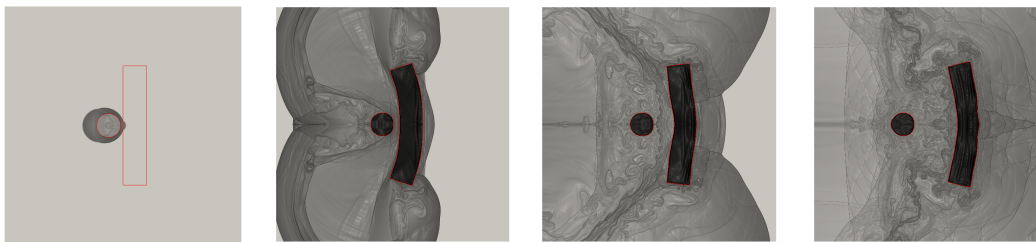


Figure 5: impact and rebound of a copper projectile on a copper plate. Interface and schlieren at $50\mu s$, $199\mu s$, $398\mu s$ and $710\mu s$.

In figure 6, we show the results of a three dimensional simulation of a cardiac pump (LVAD, left ventricule assisted device).

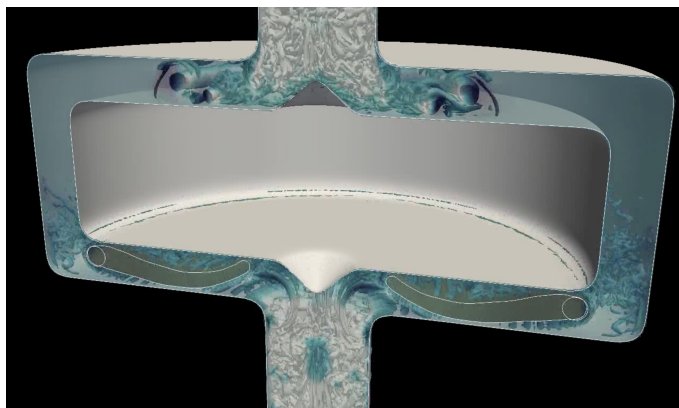


Figure 6: 3D numerical modeling of a cardiac pump (LVAD) with an elastic membrane.

Other examples are given in the sections dedicated to the new results.

5 Social and environmental responsibility

One main focus of the team is the renewable energy. We develop mathematical models and numerical methods to study problems related to renewable energies.

5.1 Impact of research results

We are studying two types of green energy extractors.

The first one is around wave energy converters (WECs). For this application, we are working with the PoliTO (Torino, Italy) to model the ISWEC, and we are also starting to work with a Bordeaux-based start-up for another device for extracting the energy from the waves via an Inria-Tech project and a Nouvelle Aquitaine Regional Project submitted by Memphis in collaboration with the CARDAMOM team.

The second one is around wind energy, and in particular wind turbines. In the past, we have supervised two PhD CIFRE thesis with VALOREM-Valeol, and are currently working with them in a European RISE ARIA project led by Memphis. We are also starting to work with IFPEN around the aeroelastic modeling of large wind turbines and the study and optimization of turbines farms in the framework of the joint laboratory Inria-IFPEN with a thesis funded by IFPEN and a post-doc funded by Inria (which will start in October 2021).

In conjunction with these activities we investigate with ANDRA, the national agency for storage of nuclear waste, reduced models allowing efficient and accurate simulations for deep geological storage planning. This activity is concretized with the PhD thesis of Giulia Sambataro.

6 Highlights of the year

Optimal transport on quadtree mesh

The idea of the optimal mass transportation is to find an optimal mapping which realizes the transfer of a density to another one. This modeling tool finds its application in ROMs, as discussed above, and in fluid-structure interactions problems as discussed in the applications. In essence, it provides a rational approach to non-linearly interpolate distributed data. Our research aim at the numerical development of algorithms to solve the L2 Monge-Kantorovich problems. In particular, in [30] two computational algorithms based on extension of the Newton method have been proposed to solve the optimal mass transfer problem for compactly supported densities. These schemes have been shown to be computationally efficient for data that are relatively close in the sense of the Wasserstein distance, but they seem to be less robust when the data are far away because they also require a continuation approach. Thus, we first fixed this problem by modifying the previous schemes and then we used the numerical tools developed within Memphis (NEOS) to solve the problem on quadtree meshes. The combination of these two developments allows the numerical implementation of extremely fast schemes for solving the L2 Monge-Kantorovich problem. A publication is in preparation.

7 New results

7.1 Fluid-Fluid-Structure interactions

The following results are obtained with the software NaSCar based on our previous works [4, 5, 6, 10]. These numerical simulations have been carried out on the cluster CURTA from the mesocentre MCIA, using 384 CPUs over 24 hours. Periodic boundary conditions are imposed on the horizontal boundaries. A special treatment is performed on the triple line, defined as being the line separating the three phases, *i.e.* water, air and the structure. A model derived from the Cox's one is used. An example of the snake swimming on the water surface is shown in Figure 7. The generation of the gravity waves are in good agreements with experiments and nature observations.

7.2 Component-based model order reduction for radioactive waste management

At the end of their cycle, radioactive materials are placed in arrays of cylindrical boreholes (dubbed *alveoli*) deep underground; due to the large temperatures of the radioactive waste, the thermal flux generated by the alveoli drives a complex time-dependent phenomenon which involves the thermal, hydraulic and mechanical (THM) response of the medium. The role of simulations is to predict the long-term system response and ultimately assess the impact of the repository site to the surrounding areas: Figure 8(a) shows a typical system configuration considered for numerical investigations. Due to the complex nature of the equations (a system of five coupled nonlinear time-dependent three-dimensional equations) and due to the uncertainty in several parameters of the model and on boundary conditions, MOR techniques are important to reduce the computational burden associated with thorough parametric studies.

The PhD project of Giulia Sambataro aims to devise a rapid and reliable component-based MOR technique for THM systems, for radioactive waste management applications. Domain decomposition methods are required to deal with varying numbers of alveoli, and also to reduce the training costs of the ROM by avoiding full-scale offline simulations. During the first year of her PhD, Giulia has worked on a two-dimensional hydro-mechanical (HM) model problem and has studied the performance of projection-based hyper-reduced MOR strategies. Figure 8(b) shows the convergence of the relative solution error with respect to the size N of the ROM and highlights the impact of hyper-reduction, which reduces the "integration domain" to improve efficiency.

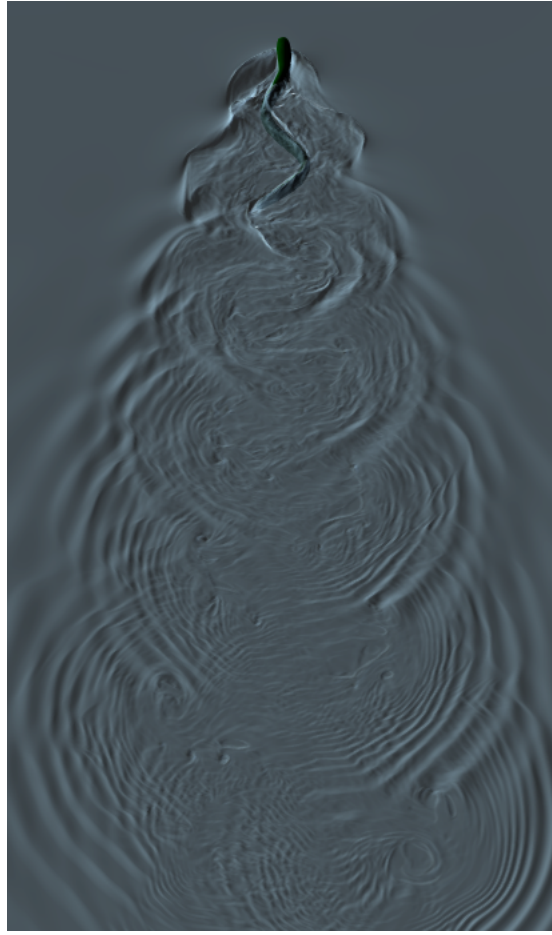


Figure 7: Numerical modeling of a snake swimming at the water surface.

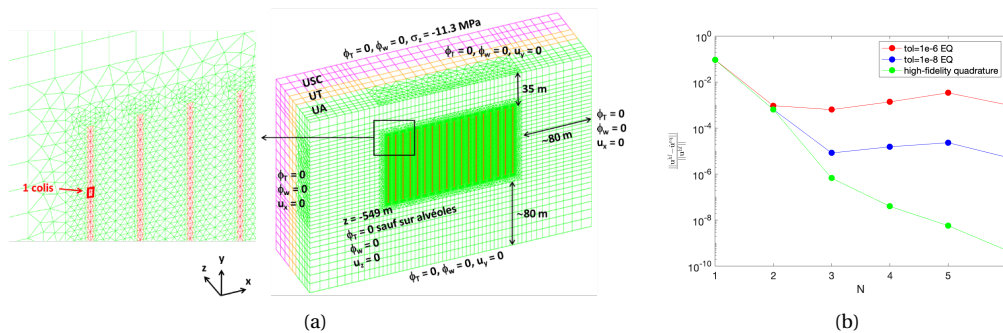


Figure 8: Component-based model order reduction for radioactive waste management. (a) typical high-fidelity mesh. (b) performance of the ROM for a two-dimensional HM model problem.

7.3 Registration methods for advection-dominated PDEs

A major issue of state-of-the-art MOR techniques based on linear approximation spaces is the inability to deal with parameter-dependent sharp gradients, which characterize the solutions to advection-dominated problems. To address this issue, we propose a registration technique to align local features in a fixed reference domain. In computer vision and pattern recognition, registration refers to the process of finding a transformation that aligns two datasets; here, registration refers to the process of finding a parametric spatio-temporal transformation that improves the linear compressibility of the solution

manifold.

A registration procedure has been proposed in [38, 16] and then further developed in [40, 39]. In particular, in [40], we considered the application to one-dimensional applications in hydraulics; in an ongoing collaboration with EDF, we aim to extend the approach to two-dimensional steady and unsteady problems. Figure 9 shows results for a Saint-Venant problem (flow past a bump): Figures 9(a) and 9(b) show the free surface z for two different parameters and two time instants, while Figure 9(c) shows the behavior of the out-of-sample projection error associated with a snapshot-based POD space with and without registration. We observe that registration is key to improve performance of linear compression strategies such as POD.

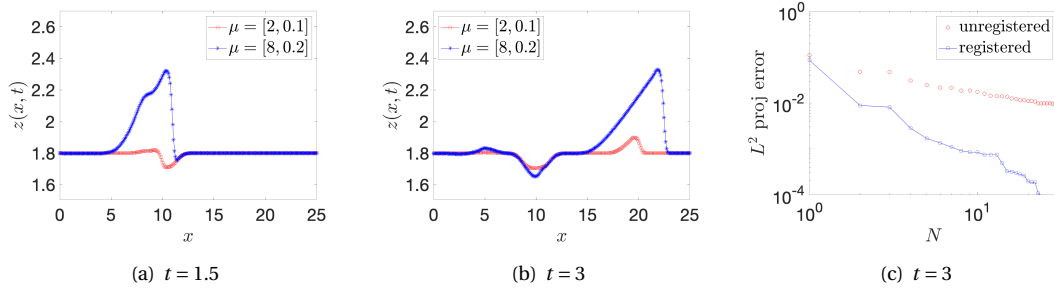


Figure 9: space-time registration for shallow water equations. (a)-(b) free surface for two different parameters and two different time instants. (c) out-of-sample projection error with and without registration.

In [25], Iollo and Taddei proposed a general (i.e., independent of the underlying PDE) nonlinear interpolation technique based on optimal transportation of Gaussian models of coherent structures of the flow. Given the domain Ω and the states $U_0, U_1 : \Omega \rightarrow \mathbb{R}$, we aim to determine an interpolation $\hat{U} : [0, 1] \times \Omega \rightarrow \mathbb{R}$ such that $\hat{U}(0, \cdot) = U_0$ and $\hat{U}(1, \cdot) = U_1$. The key features of the approach are (i) a scalar testing function that selects relevant features of the flow; (ii) an explicit mapping procedure that exploits explicit formulas valid for Gaussian distributions; (iii) a nonlinear interpolation dubbed “convex displacement interpolation” to define \hat{U} . The mapping built at step (ii) might not satisfy the bijectivity constraint in Ω : to address this issue, a nonlinear projection procedure over a space of admissible maps based on registration is proposed.

Figure 10 illustrates performance of our procedure for a compressible inviscid flow past a NACA0012 profile at angle of attack 4° for varying free-stream Mach number between $Ma = 0.77$ and $Ma = 0.83$. Figures 10(a) and 10(b) show the fluid density for $Ma = 0.77$ and $Ma = 0.83$, while Figure 10(c) shows an interpolation for an intermediate Mach number: we observe that the nonlinear interpolation smoothly deforms the shock attached to the airfoil. Figure 10(d) compares performance of the nonlinear interpolation with the linear convex interpolation $\hat{U}^{\text{co}}(s) = (1-s)U_0 + sU_1$: we observe that the proposed nonlinear interpolation is significantly more accurate than linear interpolation, for the same amount of high-fidelity information.

7.4 Numerical modeling of a real zebrafish swimming: an effort test

Zebrafish is used by biologists as an animal model to study the effects of neurotoxicants and drugs on locomotion and develop pharmacological treatments. Very few fish swimming simulations have been derived from real body deformations to investigate the complex and stereotyped escape response of zebrafish and support animal experimentation. An experiment-driven numerical approach has been developed to model the body deformations from experimental imaging and perform three-dimensional (3D) numerical simulations to compute the actual energetic performances. To this end, a novel 3D zebrafish shape described by 300×180 Lagrangian markers, was reconstructed based on 1,600 transverse slices and deformed according to experimental data (see figure 11). As a first application, three escape locomotion were recorded and simulated across six high-viscosity fluids in the range of 0.83 mPa.s to 15 mPa.s. In addition to kinematic data such as traveled distance, velocity, and bending amplitude, the expended energy and cost of transport were computed based on the power output. Eventually,

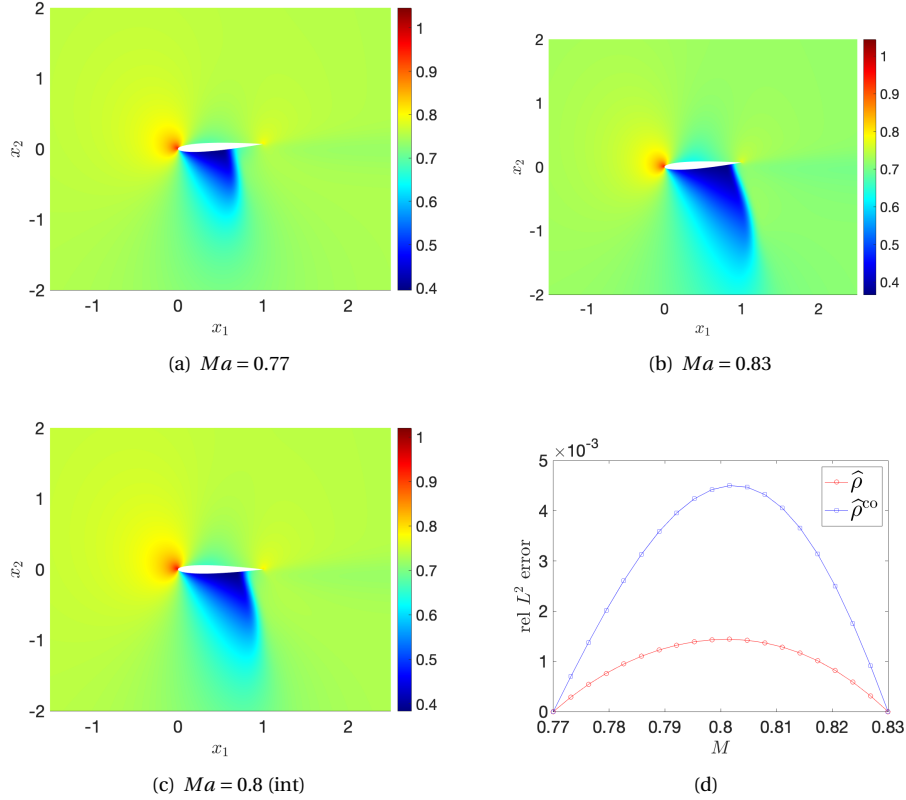


Figure 10: nonlinear interpolation based on optimal transportation of Gaussian mapping. (a)-(b) flow density ρ for two values of the free-stream Mach number. (c) non-linear interpolation $\hat{\rho}^{co}(s)$ for $s = 0.5$. (d) relative L^2 error for $Ma \in [0.77, 0.83]$.

fictitious simulations were performed by combining body deformations and fluid viscosity, especially for challenging the experimental escape motions. Such simulations have revealed energetic expenditure could be emphasized by increasing fluid viscosity. Therefore, those preliminary results provided new insights for the implementation of an effort test, involving zebrafish experiments, viscous fluids, and energetic performances from numerical simulations. The main goal of effort tests designed by biologists is to highlight zebrafish swimming performances altered by genetics or chemical compounds, by computing the power output expended in higher-viscosity fluids.

7.5 Fluid-structure interactions on AMR enabled quadree grids

A versatile fully Eulerian method has been developed for the simulation of fluid-structure interaction problems in two dimensions, involving stiff hyper-elastic materials [19]. The unified single continuum model is solved in a monolithic way using a quadtree-based Finite Volume scheme, built on very compact discretizations. In the context of fictitious domain methods, the geometry of a structure is captured through a level-set formalism, which enables to define a diffuse fluid-structure interface.

The numerical method has been validated with respect to the literature and the benefits obtained in terms of computational costs through the use of dynamic adaptive meshes has been highlighted. The low impact of coarsening on the structure deformation has been emphasized and the results suggest that the numerical method offers a valuable compromise between accuracy and feasibility of the simulation. As depicted in Figure 12, the simulation of a two-dimensional axi-symmetric flow in a cardiac assist device (LVAD geometry) has finally been proposed as a biomedical application. One paper is submitted.

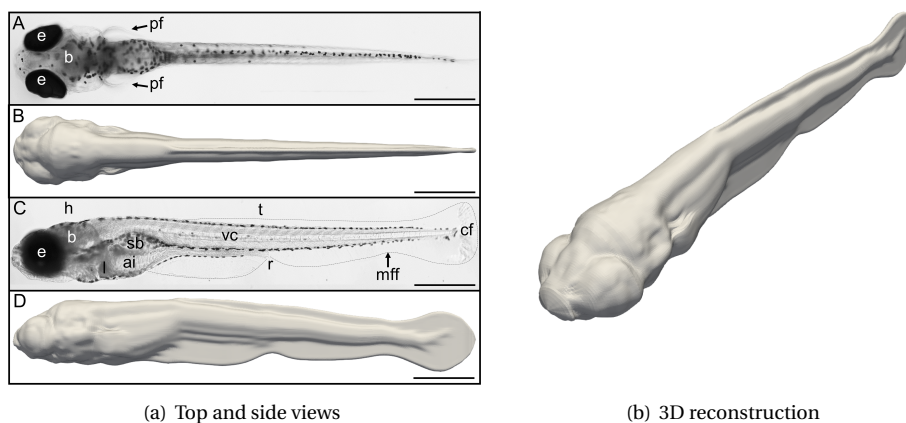


Figure 11: Numerical reconstruction of a real zebrafish larvae.

7.6 An ADER approach for the incompressible Navier-Stokes model on Overset Grids

One of the difficulties in the simulation of a fluid flow problem is the representation of the computational domain with a unique block mesh. As a matter of fact, not only the geometry could be particularly complex in itself, but it could change during the simulation and this necessary involves an *in itinere* geometrical adaptation of the mesh, with consequent high computational costs. One of the ways to overcome this problem is to use multiple overlapping mesh blocks that together define a *Chimera* or *overset* grid. Once the different mesh blocks are generated, they are properly composed by the creation of holes and, consequently, an *overlapping zone* between two overlapping blocks is defined. The overlapping zone is necessary for the the communication and data transfer from one mesh to another through an appropriate definition of local stencils of cells, both within and at the border of the individual blocks. In our simulations, the Chimera grid is composed of a background and a foreground mesh (see Figure 13). In particular, the foreground mesh can move and deform. The Navier-Stokes equations for incompressible fluids are solved through a projection method (*Chorin-Temam*) using second order schemes [20, 21]. Solution at two different time instances of an advection-diffusion PDE over an evolving nontrivial domain discretized through an overset grid are presented in Figure 13.

7.7 Projection-based reduced-order models for unsteady compressible flows

An analysis of calibration for reduced-order models (ROMs) is done in [17]. The Galerkin and least-squares Petrov-Galerkin (LSPG) methods are tested on compressible flows involving a disparity of temporal scales. A novel calibration strategy is proposed for the LSPG method and two test cases are analyzed. The first consists of a subsonic airfoil flow where boundary layer instabilities are responsible for trailing-edge noise generation and the second comprises a supersonic airfoil flow with a transient period where a detached shock wave propagates upstream at the same time that shock-vortex interaction occurs at the trailing edge. Results show that calibration produces stable and long-time accurate Galerkin and LSPG ROMs for both cases investigated. The impact of hyper-reduction is tested on LSPG models via an accelerated greedy missing point estimation (MPE) algorithm. The location for hyper-reduction points is depicted in Figure 14. For the first case investigated, LSPG solutions obtained with hyper-reduction show good comparison with those obtained by the full order model. However, for the supersonic case the transient features of the flow need to be properly captured by the sampled points of the accelerated greedy MPE method. Otherwise, the dynamics of the moving shock wave are not fully recovered. The impact of different time-marching schemes is also assessed and, differently than reported in literature, Galerkin models are shown to be more accurate than those computed by LSPG when the non-conservative form of the Navier-Stokes equations is solved. For the supersonic case, the Galerkin and LSPG models (without hyper-reduction) capture the overall dynamics of the detached and oblique shock waves along the airfoil.

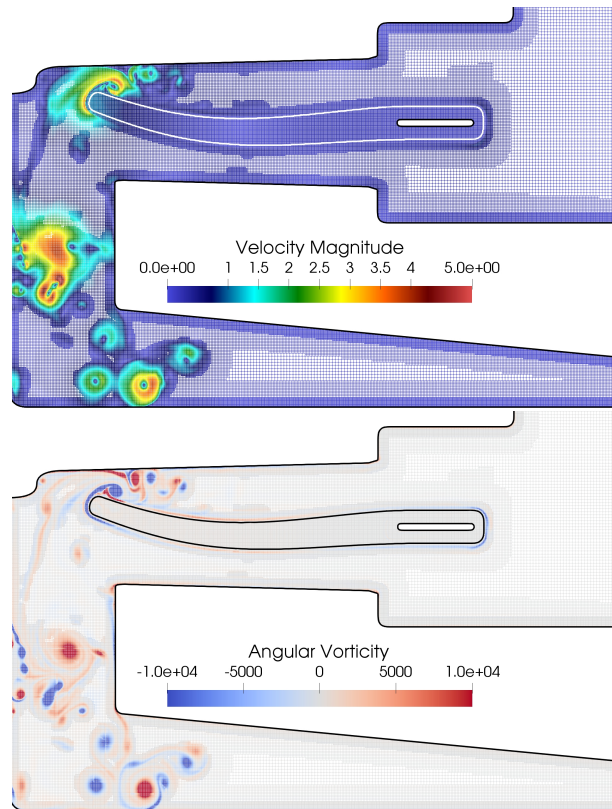


Figure 12: Oscillating membrane immersed in a 2D axis-symmetric LVAD geometry: angular component of the vorticity and velocity magnitude after 4 periods of oscillations. The AMR mesh is displayed in background.

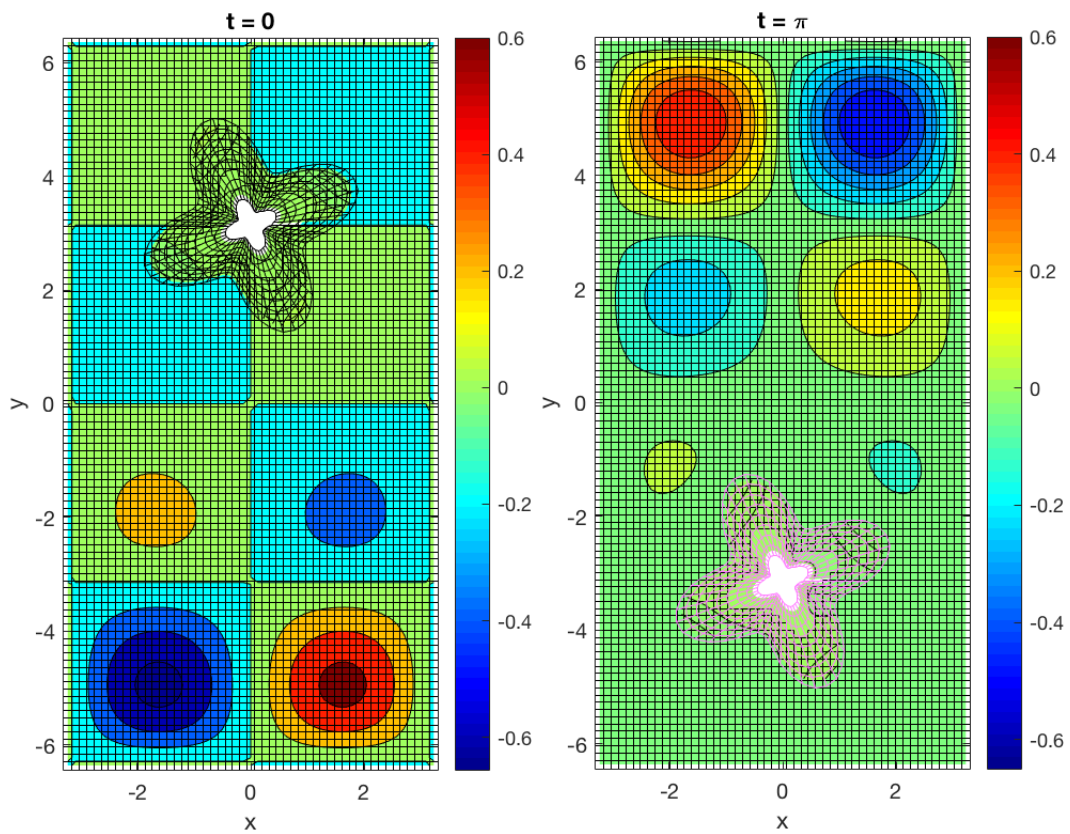


Figure 13: Solution at two different time instances of an advection-diffusion PDE over an evolving nontrivial domain discretized through an overset grid.

However, when shock-vortex interaction occurs at the trailing-edge, the Galerkin ROM is able to capture the high-frequency fluctuations from vortex shedding while the LSPG presents a more dissipative solution, not being able to recover the flow dynamics.

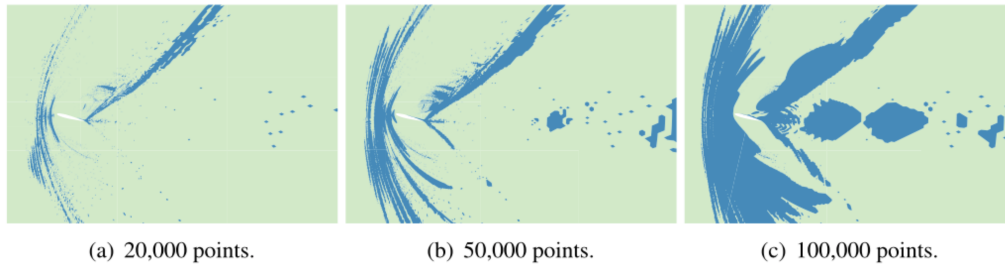


Figure 14: Sample points (in blue) chosen by the accelerated greedy-MPE hyper-reduction algorithm.

7.8 Aortic aneurysms: automatic segmentation and registration

We developed a new artificial neural network to automatically segment aortic aneurysm. The main idea with this approach was to consider each pixel of the image individually and to see if a model could learn how to categorize it as lumen only from its own intensity and the intensity of its 26 neighbors. We tested different types of input (values, means, variances...) and architecture: a sequential model was retained. For the input, each sample is a vector of 27 intensity values. Only pixels whose intensity is between 100 and 700 are kept for training and prediction.

The second axis of development concerned registration. When a patient have several scans taken at different times, the segmentations are not in the same frame so any comparison would be complicated. The objective was to bring the second segmentation in the frame of the first one. We tested different points-based approaches: register the centerline of the segmentation or the geometry; consider only the lumen or the entire aneurysm. The best results were obtained with the surface of the aneurysm and the iterative closest point algorithm. Once the registration is performed (Figure 15) we can visualize how the aneurysm has evolved.

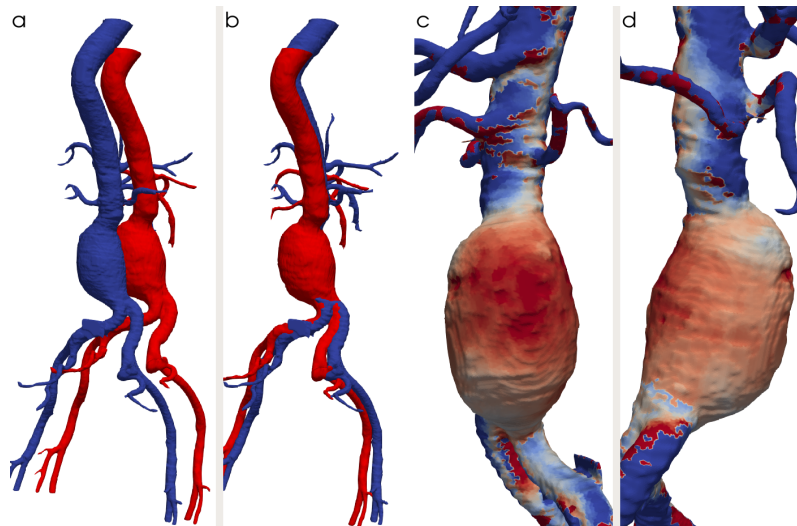


Figure 15: Example of registration. a and b: CT scans (blue: first CT scan; red: second CT scan) before and after registration. c and d: visualization of the evolution after registration. The aneurysm shrunk on the blue parts and grew on the red parts.

8 Bilateral contracts and grants with industry

8.1 Bilateral Contracts with Industry

EDF ROM HYDRAU dates: 15/08/2020 au 15/12/2021

9 Partnerships and cooperations

9.1 International initiatives

9.1.1 Associate Teams in the framework of an Inria International Lab or in the framework of an Inria International Program

MARE

Title: Multiscale Accurate Reduced-order model Enablers

Duration: 2019 -> 2022

Coordinator: Angelo Iollo

Partners: VNU University of Engineering and Technology, Stanford (United States)

Inria contact: Angelo Iollo

Summary: Reduced-order models (ROMs) are simplified mathematical models derived from the full set of partial differential equations governing the physics of the phenomenon of interest. We focus on ROMs that are data-driven as they are based on relevant solution data previously obtained. In particular we will focus on multiscale adaptive models where the large scales are governed by a PDE and the small scales are described by data driven models. To do that we will leverage on tools from data geometry, numerical PDEs and machine learning.

9.1.2 Inria International Partners

Declared Inria International Partners Politecnico di Torino (Giovanni Bracco, Francesco Larocca), with two co-tutelle PhDs: Beatrice BATTISTI (Sujet : Multi-fidelity Multi-scale numerical modelling og wave energy converters farms)

Thomas PHILIBERT (Sujet : Data-driven models for aerospace propulsion)

Informal International Partners La Sapienza Universita' di Roma (Gabriella Puppo, Dipartimento di Matematica) Università di Pisa (UNIP) (Simone Camarri, Department of Civil and Industrial Engineering)

9.2 International research visitors

9.2.1 Visits of international scientists

Andrea Christine Thomann University of Insubria in Como (Italy), from Sep 2021 until Oct 2021.

Elena Travaglia Ecole Polytechnique de Turin, Oct 2021.

9.2.2 Visits to international teams

Michel Bergmann: OPTIMAD, Turin (ARIA) : 16/11/2021-20/11/2021.

9.3 European initiatives

9.3.1 FP7 & H2020 projects

ARIA

Title: Accurate Roms for Industrial Applications

Duration: 2019 - 2023

Partners:

- STANFORD: Aeronautics & Astronautics Department (United States)
- ESTECO SpA: Department of Research and Development (Italy)
- Politecnico di Milano: Laboratory for Modeling and Scientific Computing (MOX) (Italy)
- Politecnico di Torino: Department of Science and Mathematics (Italy)
- Scuola Internazionale Superiore di Studi Avanzati di Trieste: Mathematics Area/mathLab (Italy)
- Universidad de Sevilla: Instituto de Matemáticas de la Universidad de Sevilla (IMUS) (Spain)
- University of South Carolina: Department of Mathematics (United States)
- VALOREM SAS: R & D Department (France)
- Virginia Tech - Department of Mathematics (United States)
- Virtualmechanics, S.L. (Spain)
- Optimad: R& D Department (Italy)
- Volkswagen AG: Group Research, Vehicle Technology (Germany)

Inria contact: contact@rise-aria.eu

Summary: The project Accurate Roms for Industrial Applications aims at developing an array of mathematical methods for constructing predictive reduced-order models (ROMs) with guaranteed accuracy, robustness, reliability and efficiency for applications involving complex physical phenomena. New approaches to this challenge are proposed here with a focus on the Euler and Navier–Stokes equations of fluid flow, two of the most challenging continuum models with an extraordinary rich range of industrial applications. The mathematical modeling and solution of the Euler and Navier–Stokes equations is sometimes cited as the greatest challenge in continuum modeling of physical phenomena. This topic is selected as our principal focus because of its intrinsic importance, but also because the mathematical methods developed in addressing this very challenging task may well have an impact on other fields of knowledge. We plan to tackle these challenging objectives in this staff exchange program by combining the unique expertise of our extended research team whose members have made significant progress in ROM research during the past decade. This academic expertise is cross-fertilized by the exchange with knowledge intensive SMEs and start up and well established industrial partners that will benefit from the scientific and technological results of the team and will challenge the solutions found with applications in real world problems.

9.3.2 Collaborations with Major European Organizations

EDF ROM HYDRAU : dates: 15/08/2020 au 15/12/2021.

9.4 National initiatives

ANR (national agency for research funding) DRAGON2. Partners : CNRS/Université de Poitiers/Inria. 27 k€+ 1 PhD. The goal is study the aquatic swimming a several snakes using biomimetism and bioinspiration. In this project, we have experimental data for snake swimming, and we are building a numerical twin to compute integral quantities like the efficiency. Reinforcement learning is also considered to optimize the snake swimming.

9.5 Regional initiatives

Contrat Région Nouvelle Aquitaine MODEM " MODélisation multi-échelles et multi-fidélités pour l'extraction d'Energies Marines". 48k€. Description: the goal of this project is to develop a multi-fidelity approach for the modeling and the optimization of Wave Energy Converters (WECs). We compute the fluid structure interaction problem in a close neighbourhood of the WEC using accurate but expensive non linear Navier-Stokes equations. The far field is computed using using a simpler linear or weakly non linear reduced order model, like the shallow water or Boussinesq models.

10 Dissemination

10.1 Promoting scientific activities

Angelo Iollo: 2019-. Nominated at the council of "Département de Sciences du Numérique et Ingénierie" of the University of Bordeaux.

10.1.1 Scientific events: organisation

Tommaso TADDEI has co-organized CEMRACS 2021 on data assimilation and model reduction in high-dimensional problems.

Michel Bergmann & Tommaso Taddei. Organisation of the minisymposium at the [SIAM CSE conference](#), 2021 (with K. Smetana).

Reviewer - Reviewing Activities The members of the team were reviewers for: Journal of Computational Physics, International Journal of CFD, Journal of Non-linear Analysis B, ASME Journal of Computational and Nonlinear Dynamics, Journal of Fluid Mechanics, Acta Mechanica, AIAA Journal, International Journal Numerical Methods in Fluids, Computers & Fluids, Journal of Engineering Mathematics, European Journal of Mechanics / B Fluids, Journal Européen de Systemes Automatisés, Applied Mathematics and Computation. Nuclear Science and Engineering, Computer Methods in Applied Mechanics and Engineering, Journal of Theoretical Biology, Computational Optimization and Applications, Applied science, Meccanica, SIAM journal on scientific computing, SIAM journal on uncertainty quantification, Advances in Computational Mathematics.

10.1.2 Journal

Michel Bergmann is Topic Editor in [FLUIDS](#).

Michel Bergmann is Guest Editor in *Scientific Computing in Fluids*, FLUIDS (2021)

Michel Bergmann is Guest Editor in *Data-Driven Modeling and Optimization in Fluid Dynamics: From Physics-Based to Machine Learning Approaches*, Frontiers in Physics (2021-2022)

10.1.3 Invited talks

Angelo Iollo is invited in international conferences or workshops:

- November 8-9, 2021. Année de la mécanique. [Séminaire à IHP: Mathématiques et Mécanique](#). Parameterized flows: examples of convergence between data and computational science. .
- June, 17th, 2021. [Euromech Conference on Machine learning methods for prediction and control of turbulent flows](#). "Parameterized flows: examples of convergence between data and computational science".

10.2 Teaching - Supervision - Juries

10.2.1 Teaching

Two members of the team are Professor (Angelo Iollo) or Assistant Professor (Afaf Bouharguane) at Université de Bordeaux and have teaching duties, which consist in courses and practical exercises in numerical analysis and scientific computing. Michel Bergmann (CR) also teaches around 64 hours per year (practical exercises in programming for scientific computing). Tommaso Taddei (CR) also teaches around 50 hours per year (practical exercises in numerical analysis and scientific computing).

10.2.2 Supervision

1. 2018-2021. Antoine Fondanèche. Bourse Université de Bordeaux. Interaction fluide-structure dans les endoprothèses et autres dispositifs vasculaires actifs. Advisors: Michel Bergmann, Angelo Iollo.
2. 2021-2024. Eki AGOUZAL Cifre. (Industrial thesis), EDF Estimation de l'état mécanique d'enceintes de confinement par assimilation de données provenant de la maquette Vercors. Advisors: Michel Bergmann, Tommaso Taddei.
3. 2020-2023. Beatrice BATTISTI, Politecnico di Torino. Multi-fidelity multi-scale numerical modelling of wave energy converters farms. Advisors: Michel Bergmann, Giovanni Bracco.
4. 2018-2021. Michele Giuliano CARLINO, Inria. Fluid-structure Interactions models on Chimera grids. Advisors: Michel Bergmann, Angelo Iollo.
5. Caroline LE GUERN, Ifpen. Modelisation de l'aero-élasticité en grandes transformations par un couplage partitionné: application aux grandes éoliennes. Advisor: Michel Bergmann.
6. 2021-2024. Karl MAROUN, Université de Poitiers (ANR Dragon2). Biomimetism and bioinspiration of a snake's anguilliform swimming: numerical twin and machine learning. Advisors: Michel Bergmann, Philippe Traoré.
7. 2020-2023. Thomas PHILIBERT, Politecnico di Torino. Convergence between models and data for the simulation of turbulent flows in aeronautical propulsion. Advisors: Angelo Iollo, Francesco Larocca.
8. 2021-2024. Michele ROMANELLI, Chaire ONERA. Lois de Paroi à Apprentissage Profond pour Simulations Aérodynamiques. Advisors: Héloïse Beaugendre, Michel Bergmann.
9. 2020-2023. Ludovica SACCARO, Inria. Identification of mechanical biomarkers for assessing the risk of rupture of abdominal aortic aneurysms. Advisor: Angelo Iollo.
10. 2021-2024. Alexis TARDIEU, Université de Bordeaux. Approches Galerkin Discontinues spatio-temporelles sur des mailles hiérarchiques pour les équations de Navier-Stokes incompressibles. Advisors: Angelo Iollo, Afaf Bouharguane.
11. 2019-2022. Giulia SAMBATARO, Andra. Component-based reduction strategies for THM equations. Advisors: Angelo Iollo, Tommaso Taddei.

10.2.3 Juries

Michel Bergmann: membre of the Phd jury of Luca Berti « méthodes numériques et optimisation pour la micro-natation », Université de Strasbourg, 13 décembre 2021.

Angelo Iollo:

Rapporteur de la thèse de Matteo Zancanaro, SISSA département de mathématiques, «Model order reduction for compressible turbulent flows: hybrid approaches in physics and geometry parametrization», september 24th, 2021. Trieste.

Rapporteur de la thèse en mécanique de Nan Deng, "Deep mean-field modelling for successive bifurcations exemplified for the fluidic pinball", 27 septembre 2021. ENSTA Paris.

Président du jury de thèse mention mathématiques de Stefano Pezzano, « Méthode de Galerkin Discontinue Isogéométrique avec domaines dépendants du temps », 13 septembre 2021, Inria Sophia Antipolis, Université de Nice.

10.3 Popularization

In September 2021, Tommaso TADDEI has presented his research at the event *Unithé ou Café* at Inria Bordeaux.

11 Scientific production

11.1 Major publications

- [1] E. Abbate, A. Iollo and G. Puppo. ‘An all-speed relaxation scheme for gases and compressible materials’. In: *Journal of Computational Physics* 351 (2017), pp. 1–24. DOI: [10.1016/j.jcp.2017.08.052](https://doi.org/10.1016/j.jcp.2017.08.052). URL: <https://hal.inria.fr/hal-01586863>.
- [2] L. Benetti Ramos, O. Marquet, M. Bergmann and A. Iollo. ‘Fluid–solid Floquet stability analysis of self-propelled heaving foils’. In: *Journal of Fluid Mechanics* 910 (2021), A28. DOI: [10.1017/jfm.2020.1021](https://doi.org/10.1017/jfm.2020.1021). URL: <https://hal.archives-ouvertes.fr/hal-03110288>.
- [3] M. Bergmann, C.-H. Bruneau and A. Iollo. ‘Enablers for robust POD models’. In: *Journal of Computational Physics* 228.2 (2009), pp. 516–538.
- [4] M. Bergmann, J. Hovnanian and A. Iollo. ‘An accurate cartesian method for incompressible flows with moving boundaries’. In: *Communications in Computational Physics* 15.5 (2014), pp. 1266–1290.
- [5] M. Bergmann and A. Iollo. ‘Bioinspired swimming simulations’. In: *Journal of Computational Physics* 323 (2016), pp. 310–321.
- [6] M. Bergmann and A. Iollo. ‘Modeling and simulation of fish-like swimming’. In: *Journal of Computational Physics* 230.2 (2011), pp. 329–348.
- [7] F. Bernard, A. Iollo and G. Puppo. ‘Accurate Asymptotic Preserving Boundary Conditions for Kinetic Equations on Cartesian Grids’. In: *Journal of Scientific Computing* (2015), p. 34.
- [8] A. Bouharguane, A. Iollo and L. Weynans. ‘Numerical solution of the Monge–Kantorovich problem by density lift-up continuation’. In: *ESAIM: Mathematical Modelling and Numerical Analysis* 49.6 (Nov. 2015). 1577.
- [9] A. De Brauer, A. Iollo and T. Milcent. ‘A Cartesian Scheme for Compressible Multimaterial Models in 3D’. In: *Journal of Computational Physics* 313 (2016), pp. 121–143.
- [10] F. Luddens, M. Bergmann and L. Weynans. ‘Enablers for high-order level set methods in fluid mechanics’. In: *International Journal for Numerical Methods in Fluids* 79 (Dec. 2015), pp. 654–675.

11.2 Publications of the year

International journals

- [11] L. Benetti Ramos, O. Marquet, M. Bergmann and A. Iollo. ‘Fluid–solid Floquet stability analysis of self-propelled heaving foils’. In: *Journal of Fluid Mechanics* 910 (2021), A28. DOI: [10.1017/jfm.2020.1021](https://doi.org/10.1017/jfm.2020.1021). URL: <https://hal.archives-ouvertes.fr/hal-03110288>.
- [12] M. Bergmann and L. Weynans. ‘A Cartesian Method with Second-Order Pressure Resolution for Incompressible Flows with Large Density Ratios’. In: *Fluids* 6.11 (6th Nov. 2021), p. 402. DOI: [10.3390/fluids6110402](https://doi.org/10.3390/fluids6110402). URL: <https://hal.inria.fr/hal-03506971>.
- [13] S. Riffaud, M. Bergmann, C. Farhat, S. Grimberg and A. Iollo. ‘The DGDD Method for Reduced-Order Modeling of Conservation Laws’. In: *Journal of Computational Physics* 437 (2021). DOI: [10.1016/j.jcp.2021.110336](https://doi.org/10.1016/j.jcp.2021.110336). URL: <https://hal.inria.fr/hal-03213731>.

- [14] T. Taddei and L. Zhang. ‘A discretize-then-map approach for the treatment of parameterized geometries in model order reduction’. In: *Computer Methods in Applied Mechanics and Engineering* (1st Oct. 2021). URL: <https://hal.archives-ouvertes.fr/hal-03120853>.
- [15] T. Taddei and L. Zhang. ‘Registration-based model reduction in complex two-dimensional geometries’. In: *Journal of Scientific Computing* (4th Aug. 2021). URL: <https://hal.archives-ouvertes.fr/hal-03121165>.
- [16] T. Taddei and L. Zhang. ‘Space-time registration-based model reduction of parameterized one-dimensional hyperbolic PDEs’. In: *ESAIM: Mathematical Modelling and Numerical Analysis* 55.1 (Jan. 2021), pp. 99–130. DOI: [10.1051/m2an/2020073](https://doi.org/10.1051/m2an/2020073). URL: <https://hal.archives-ouvertes.fr/hal-03146217>.
- [17] V. Zucatti, W. Wolf and M. Bergmann. ‘Calibration of projection-based reduced-order models for unsteady compressible flows’. In: *Journal of Computational Physics* 433 (May 2021), p. 110196. DOI: [10.1016/j.jcp.2021.110196](https://doi.org/10.1016/j.jcp.2021.110196). URL: <https://hal.inria.fr/hal-03152115>.

Doctoral dissertations and habilitation theses

- [18] M. G. Carlino. ‘ADER scheme on Overset Grids with Compact Transmission and Hyper-reduction : Application to Incompressible Navier-Stokes Equations’. Université de Bordeaux, 15th Dec. 2021. URL: <https://tel.archives-ouvertes.fr/tel-03499022>.
- [19] A. Fondanèche. ‘Fluid-structure interaction in an active vascular device’. Université de Bordeaux, 3rd Sept. 2021. URL: <https://tel.archives-ouvertes.fr/tel-03374762>.

Reports & preprints

- [20] M. Bergmann, M. G. Carlino and A. Iollo. *Second order ADER scheme for advection-diffusion on moving overset grids with a compact transmission condition*. 26th Oct. 2021. URL: <https://hal.inria.fr/hal-03119830>.
- [21] M. Bergmann, M. G. Carlino, A. Iollo and H. Telib. *ADER scheme for incompressible Navier-Stokes equations on Overset grids with a compact transmission condition*. RR-9414. Inria & Labri, Univ. Bordeaux; Optimad, 16th June 2021, p. 32. URL: <https://hal.inria.fr/hal-03263417>.
- [22] M. Bergmann, A. Fondanèche and A. Iollo. *An Eulerian finite-volume approach of fluid-structure interaction problems on quadtree meshes*. 17th Dec. 2021. URL: <https://hal.inria.fr/hal-03485251>.
- [23] A. Ferrero, T. Taddei and L. Zhang. *Registration-based model reduction of parameterized two-dimensional conservation laws*. 22nd Nov. 2021. URL: <https://hal.archives-ouvertes.fr/hal-03441745>.
- [24] A. Iollo, G. Sambataro and T. Taddei. *A projection-based model reduction method for nonlinear mechanics with internal variables: application to thermo-hydro-mechanical systems*. 22nd Nov. 2021. URL: <https://hal.archives-ouvertes.fr/hal-03441725>.
- [25] A. Iollo and T. Taddei. *Mapping of coherent structures in parameterized flows by learning optimal transportation with Gaussian models*. 22nd Nov. 2021. URL: <https://hal.archives-ouvertes.fr/hal-03441730>.
- [26] G. Ravel, M. Bergmann, A. Trubuil, J. Deschamps, R. Briandet and S. Labarthe. *Inferring characteristics of bacterial swimming in biofilm matrix from time-lapse confocal laser scanning microscopy*. 11th Jan. 2022. URL: <https://hal.inrae.fr/hal-03479903>.
- [27] S. Riffaud, G. Ravon, T. Allard, F. Bernard, A. Iollo and C. Caradu. *Automatic branch detection of the arterial system from abdominal aortic segmentation*. 11th Jan. 2022. URL: <https://hal.archives-ouvertes.fr/hal-03520790>.

11.3 Cited publications

- [28] P. Angot, C.-H. Bruneau and P. Fabrie. ‘A penalization method to take into account obstacles in a incompressible flow’. In: *Numerische Mathematik* 81.4 (1999), pp. 497–520.
- [29] P. Barton, D. Drikakis, E. Romenski and V. Titarev. ‘Exact and approximate solutions of Riemann problems in non-linear elasticity’. In: *Journal of Computational Physics* 228.18 (2009), pp. 7046–7068.
- [30] A. Bouharguane, A. Iollo and L. Weynans. ‘Numerical solution of the Monge-Kantorovich problem by density lift-up continuation’. In: *ESAIM: M2AN* 49.6 (2015), pp. 1577–1592.
- [31] A. D. Brauer, A. Iollo and T. Milcent. ‘A Cartesian scheme for compressible multimaterial models in 3D’. In: *Journal of Computational Physics* 313 (2016), pp. 121–143. DOI: <http://dx.doi.org/10.1016/j.jcp.2016.02.032>. URL: <http://www.sciencedirect.com/science/article/pii/S0021999116000966>.
- [32] B. Cantwell and D. Coles. ‘An experimental study of entrainment and transport in the turbulent near wake of a circular cylinder’. In: *Journal of fluid mechanics* 136 (1983), pp. 321–374.
- [33] S. Gavriluk, N. Favrie and R. Saurel. ‘Modelling wave dynamics of compressible elastic materials’. In: *Journal of Computational Physics* 227.5 (2008), pp. 2941–2969.
- [34] S. Godunov. *Elements of continuum mechanics*. Nauka Moscow, 1978.
- [35] X. Jin. ‘Construction d’une chaîne d’outils numériques pour la conception aérodynamique de pales d’éoliennes’. PhD thesis. Université de Bordeaux, 2014.
- [36] G. Miller and P. Colella. ‘A Conservative Three-Dimensional Eulerian Method for Coupled Solid-Fluid Shock Capturing’. In: *Journal of Computational Physics* 183.1 (2002), pp. 26–82.
- [37] J. A. Sethian. *Level Set Methods and Fast Marching Methods*. Cambridge University Press, Cambridge, UK, 1999.
- [38] T. Taddei. ‘A registration method for model order reduction: data compression and geometry reduction’. In: *SIAM Journal on Scientific Computing* 42.2 (2020), A997–A1027.
- [39] T. Taddei and L. Zhang. ‘Registration-based model reduction in complex two-dimensional geometries’. In: *submitted to Journal of Scientific Computing* (2021).
- [40] T. Taddei and L. Zhang. ‘Space-time registration-based model reduction of parameterized one-dimensional hyperbolic PDEs’. In: *ESAIM: Mathematical Modelling and Numerical Analysis (accepted)* (2020).